

How to Search **CensusCD+Maps** on CD-ROM

Introduction

CensusCD+Maps provides current and historical demographic data with built-in thematic mapping and reporting tools. The core database is comprised of the results of the 1990 US Census Long Form Questionnaire (distributed by the Census Bureau on 67 CD-ROMS titled STF-3-A,B,C, & D) for 16 geographic levels from the nation down to the Census Block Group.

Location

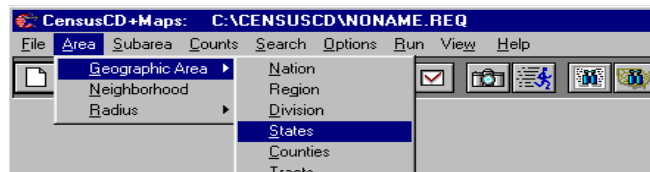
CensusCD+Maps is located in the **Babbidge Library, Level 1, Information Café 2, Table 6, Shared CD-ROM 1 Workstation.**

Help

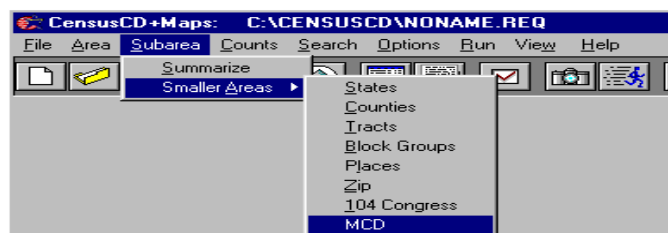
The CensusCD+Maps Help provides a tutorial, detailed instructions on the functionality of the database and the creation of maps and tables, and documentation for the sources of the data.

To Begin

- Click Census/Demographics on the Documents-Federal and State homepage at the Documents Workstation.
- Select **CensusCD+Maps**, 1990.
- Pull down the Area menu to select the overall Geographic Area you are interested in. When defining the area, choose the largest area division possible to define the context for the data, to be broken down into subareas in the next step. For example, if you wish to compare states within the entire United States, choose Nation; if you want to compare Minor Civil Divisions within a state, choose State; if you want to compare two counties, choose Counties, etc.



- Pull down the Subarea menu and choose the appropriate Smaller Area in order to break the Area you have chosen into smaller parts. CensusCD+Maps will display only the valid break downs on the Subarea/Smaller Areas menu for the larger Area you have chosen.



- Pull down the Counts menu and choose the census data you wish to be displayed on the map or table:
 - ◆ **Standard Counts** are pre-formatted reports with demographic data already selected based on 37 categories such as Income, Housing, Families, Race, 1997 Estimate/2002 Projections, 97/02 Consumer Spending, County Time Series(TS) Agriculture, County TS Crime, County TS Banking, County TS Building, County TS Government Spending, County TS Industry, County TS Retail, County Population 1790 - 1990, and All 1990 Census Counts.
 - ◆ **Tailored Counts** allow selection of individual demographic data items or Counts for the chosen Area/Smaller Areas. Allows for up to 240 specific selections in any one report. Data variables are organized into 18 groups or categories each of which has one or more tables of data. A selection screen appears after a menu choice is made.

To Display the Selected Data in a Map

To display the Census data in map format, drag down on **Run** and select **Map**.

The resulting map can be **manipulated** with the functions described below, **saved as a bitmap file** to be imported into other documents, or **printed**.

Click to zoom in on a particular part of the map

Click to zoom out

Click to reposition map within window

Change data item within report to be displayed

Create a customized display based on a formula for the data; e.g. car-poolers as a percentage of the total population

Displays map legend; can be used to vary number of ranges displayed, and to change between equal counts, equal ranges, mean +- standard deviation, or a custom tabulation for the data

To Create Data Tables

To display the Census data in tabular format, drag down on **Run** and select **ASCII File**. Data can be imported into popular spreadsheet programs such as Microsoft Excel as Comma- or Tab-delimited files. Select with header for either option so that the data descriptions will appear above each column.

By default, any files created are given the title "noname" and appear immediately in the **Censuscd** folder on the computer's 'C' drive. To save a table, choose **My Computer** from the Windows desktop, open the Censuscd folder, and move the noname file to a floppy disc.

Any reports created subsequently will automatically replace the 'noname' file previously created.

Counts Description Report

This report documents every request: its area, its subarea, a full description of the counts selected, and any options selected. It is especially useful in giving the full description of the often cryptic, 8 character count short name. A Counts Description Report is created with every new map or data file, and is given the name 'noname.doc' in the **Censuscd** folder on the computer's 'C' drive.

For further assistance, ask at the Babbidge Library, Reference Desk, Level 1.